

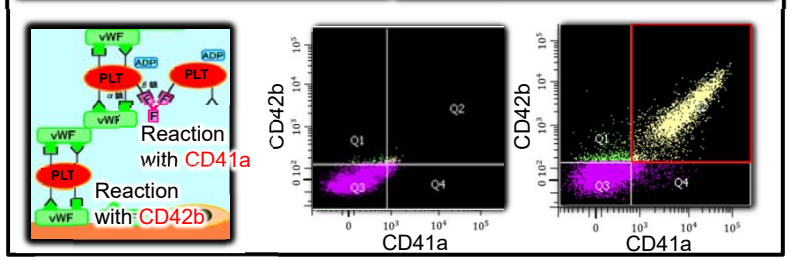
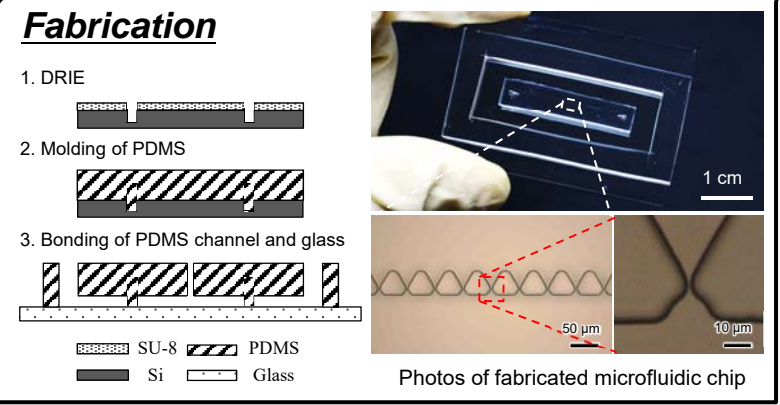
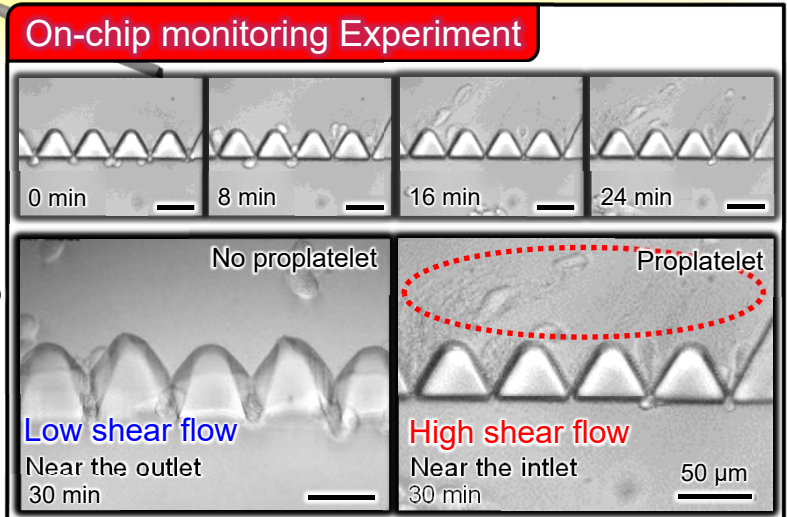
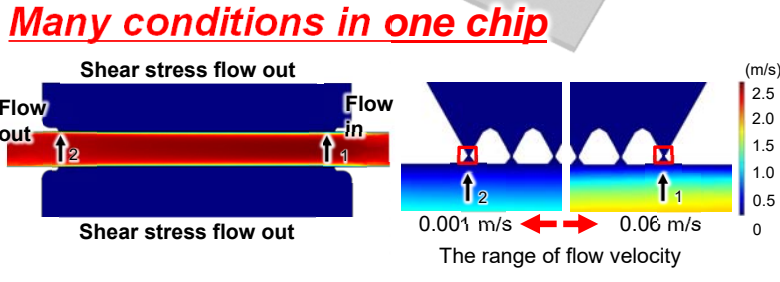
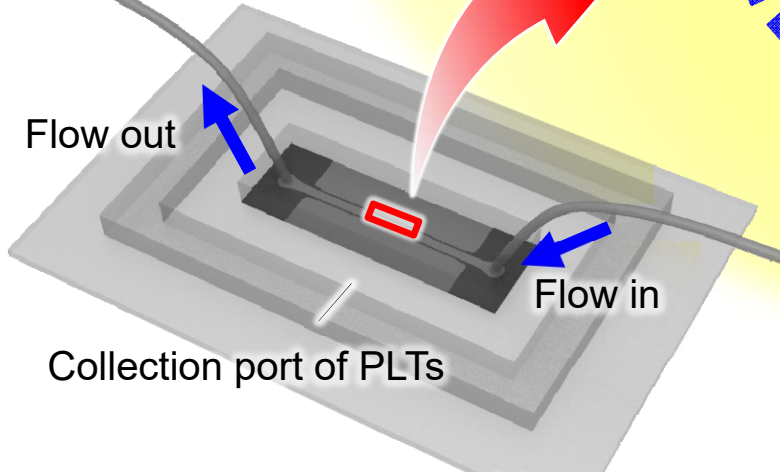
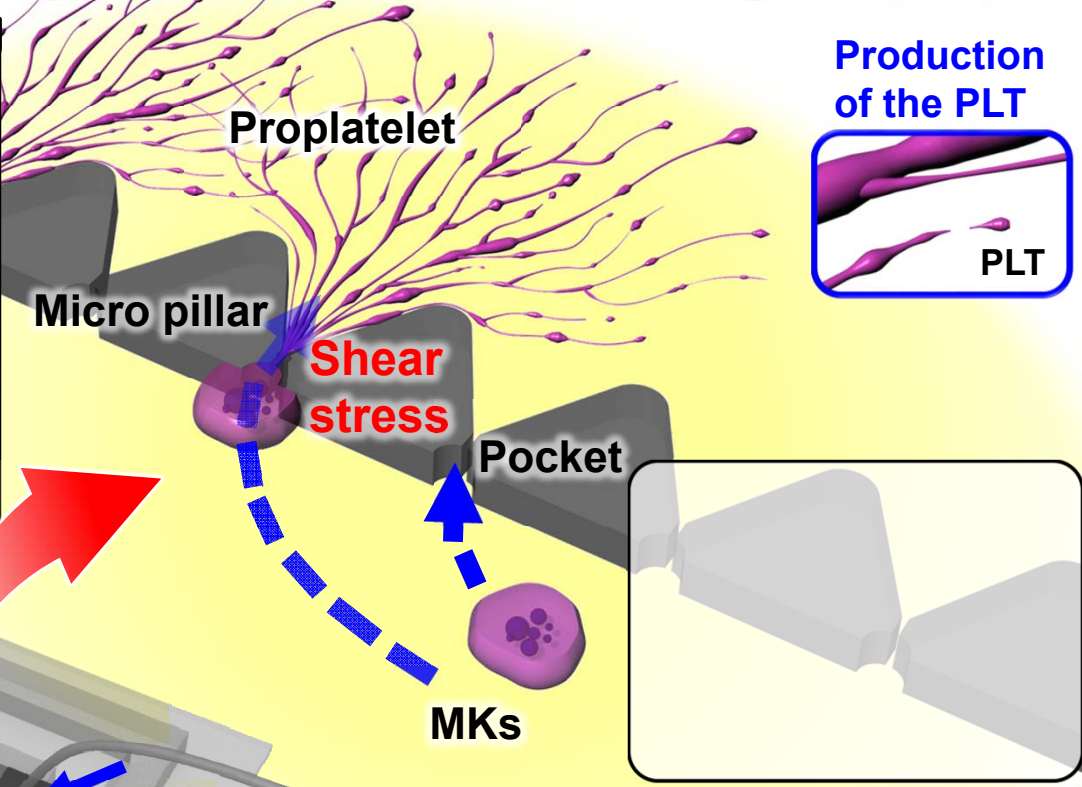
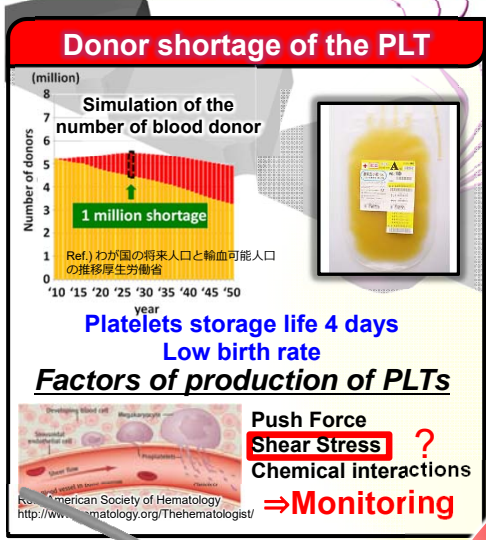
# ON-CHIP MONITORING OF THE MEGAKARYOCYTE IN SHEAR FLOW ENVIRONMENT



○ Kazuya Tashiro<sup>1</sup>, Shinya Sakuma<sup>1</sup>, Keitaro Ito<sup>1</sup>, Sou Nakamura<sup>2</sup>  
 Koji Eto<sup>2</sup>, Toshio Fukuda<sup>3</sup>, Fumihito Arai<sup>1</sup>  
<sup>1</sup>Nagoya University, <sup>2</sup>Kyoto University, <sup>3</sup>Meijo University



## Observation of the dynamic deformation of megakaryocytes



### Conclusion

We constructed on-chip monitoring system of MKs in shear stress flow and observed generation of proplatelets. Collected cells had characteristic receptors of PLT. In the future, we will seek the mechanism of production of the PLT.

